

VOICE of HERITAGE

HISTORIC
PLACES
AOTEAROA

Conference programme finalised

FROM THE TOP

HPA President Elizabeth Pishief

Hello everyone. Welcome to our spring edition of Voice of Heritage.

Local Heritage Matters

The arrangements for the conference about "Local Heritage Matters" on 8-10 November in Napier at the War Memorial Conference Centre of the Marine Parade are finalised. For the latest information on the Community Heritage

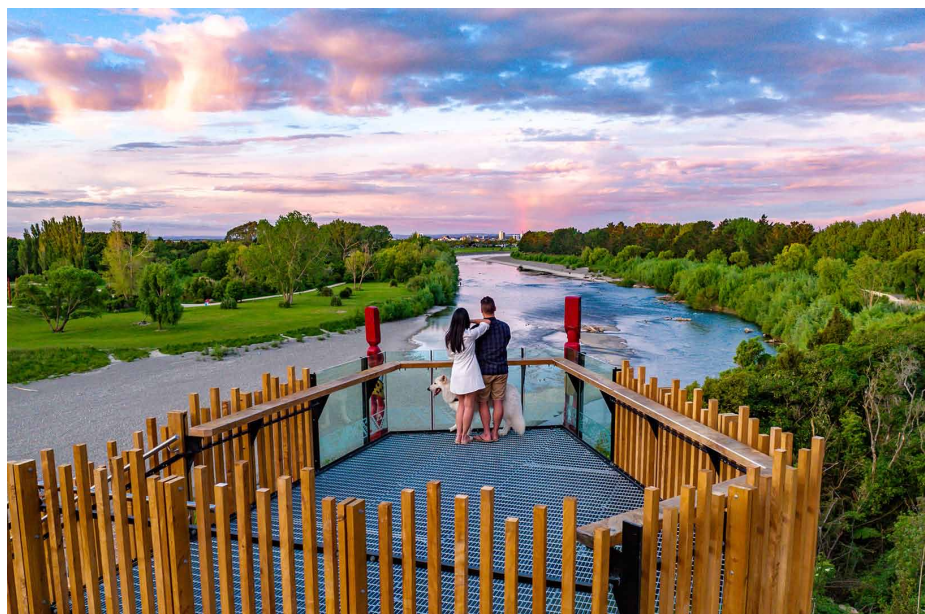


Programme follow the link here: <https://www.historicplacesaotearoa.nz/news-events/2024-conference-details>

Letter to the Minister

Recently, we wrote to the Honourable Minister Chris Bishop in response to the Mayor of Wellington City Council, Tory Whanau's request for a law change to enable local government to use a council resolution process to delist heritage buildings from

Continued on page 14:



Physical acknowledgement of one of many important cultural sites beside the Manawatū River. PNCC

Palmy heritage alive and well

by Palmerston North Mayor Grant Smith

Too often, history and heritage are taken for granted. While in past times, Palmerston North City hasn't an altogether distinguished record for retaining its heritage buildings and sites, the will to preserve the stories, emblems and essence of the city's history has more recently strengthened considerably.

Council contributes to the preservation of the city's past by carefully curating the present. After all, today's events are tomorrow's history. Courtesy of our experienced City Library heritage team, there's the ongoing maintenance of City Archives, the interactive Manawatū Heritage site, and support for the well-established and popular Local History Week with its extension into the Heritage Month of March.

Manawatū Heritage is important



because it provides city residents with an easily accessible on-line digitised repository for photographs, family, business, social and cultural records - adding personality, texture, detail and dimension to the city's wider story.

One result of our valued city partnership with mana whenua Rangitāne o Manawatū is the ongoing acknowledgement and elevation of pre-European Tahuna-ā-Rua pā and kāinga sites along the Manawatū River where Palmerston North is now. At the end of May, the experiential digital exploration *He Ara Kotahi, Hei Ara Kōrero* was launched. Sharing the histories and traditions of six culturally significant riverside locations, the project made

Continued on page 4



Our executive

The HPA seven-member executive meets monthly via Microsoft Teams. Its members are:

Elizabeth Pishief (president)

president@historicplacesaotearoa.org.nz

James Blackburne

james@historicplacesaotearoa.org.nz

Bronwyn Labrum

BronwynL@wrm.org.nz

Denis Pilkington

denis@historicplacesaotearoa.org.nz

Gary Russell

kinder_house@xtra.co.nz

Christopher Templeton

opentenor@hotmail.com

EX-OFFICIO

Gillian Creighton (minutes secretary)

Jo McLean (treasurer)

accounting@historicplacesaotearoa.org.nz

JOIN US TODAY
to advocate for our
heritage, we need your
strong voices locally,
regionally and nationally

ARCHITECTURAL TERMS *explained*



Keystone in NZ Insurance building, Gisborne

KEYSTONE

The central wedge-shaped stone in an arch, which can sometimes be decorated.

In older stone buildings, the keystone was a critical feature of the arch. However, in New Zealand brick buildings, the keystone would often be purely decorative.

HPA Executive Mahi

Earthquake- Prone Buildings Review

Earthquake-prone buildings (EPB) legislation has emerged as one of the greatest current threats to many heritage buildings. HPA is concerned that time is starting to run out for many heritage buildings in high seismic areas assessed as earthquake-prone under special provisions of the Building Act enacted in 2017.

The legislation required that EPBs in high seismic areas should be strengthened or demolished within seven and a half to 15 years depending on the seismic risk and location of the building. The deadline extends to 12 and a half and 25 years in medium seismic risk areas and to 35 years for all EPBs in low risk areas. (See map below).

Progress on seismic remediation has been variable and in too many cases remediation is unlikely to be completed by the deadline, which could result in demolition of many heritage buildings. Building owners are concerned about the cost of remediation and the cost effectiveness of the expenditure involved. Against this background, the Minister of Building & Construction Chris Penk recently announced an extensive review of the management of seismic risk in existing buildings. The review aims to ensure seismic risk in existing buildings is being managed effectively and in a workable, proportionate way. This review could take a couple of years to complete and could result in changes to the Building Act.

Pending the review's outcome, the Minister announced that current deadlines for seismic remediation have been extended by four years.

This extension of time will provide opportunities for alternative remedies and incentives that might emerge during the review to be considered and hopefully ease the path to seismic remediation for heritage building owners.

Some suggestions that have emerged include financial incentives such as the reestablishment of EQUIP grants and the possibility of writing off seismic work as maintenance rather than capital expenditure, hence providing some tax relief.

Other suggestions include possible stage-wise remediation including priority for high risk aspects of a building with a longer time frame for lower risk areas. It has been noted that the risk to human life from a collapsing building could be much less for a building situated in a small town, compared with a major city CBD building, and priorities might be adjusted accordingly.

HPA will continue lobbying for realistic solutions to current seismic remediation issues with the aim of minimising the demolition of earthquake-prone heritage buildings.

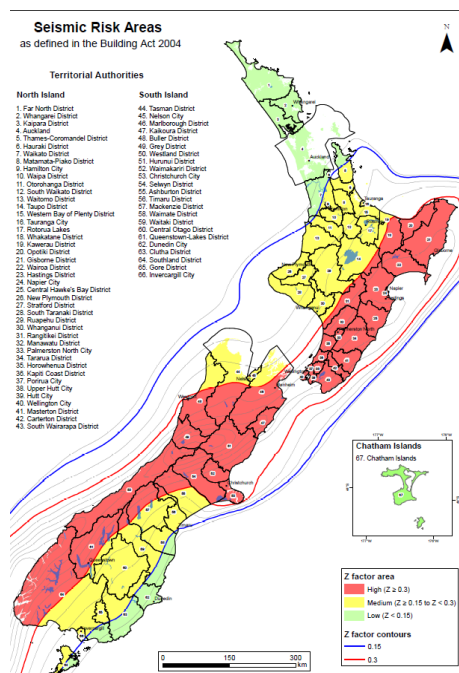
Website

Work is continuing on the development of the new HPA website <https://www.historicplacesaotearoa.nz/>

Contact with Member Organisations (MOs) and Associate Members can be accessed through the logos on the home page. We ask members to keep an eye on these pages to ensure they remain accurate and up to date. Where members have their own website, links are provided for these sites. Space is available for Member Organisations without websites to post news items or promotion of upcoming events etc on the HPA website.

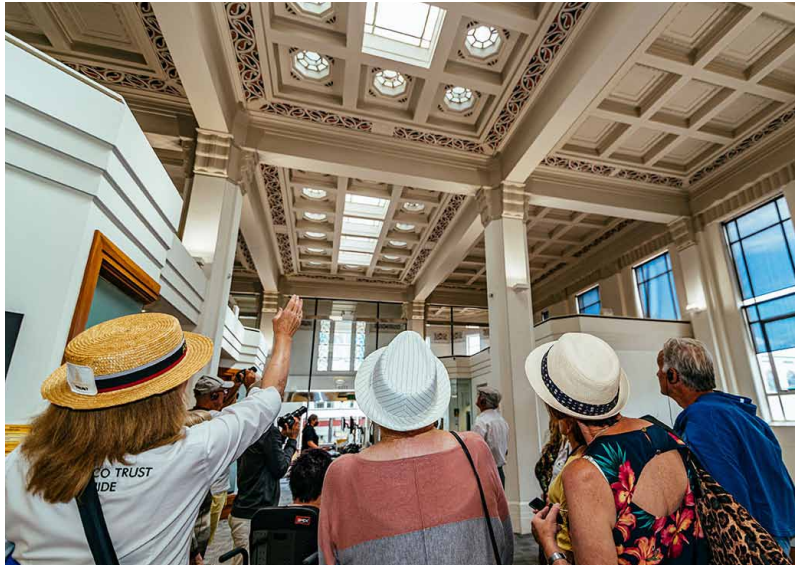
We encourage MOs to make use of this service and if it gets regular use we can train MOs on the posting process. In the meantime, we can post on your behalf.

Development will continue and we remain open to suggestions for extra material that could be included in the site, especially ways to widely promote the activities of our members.



Voice of HERITAGE Trusted as guardians of Napier's built heritage

Symmetry and stylized geometric patterns, fusing art and technology, heralded an evolving new style that rose to global prominence with the Paris World Fair of 1925, the Exposition Internationale des Arts Décoratifs et Industriels Modernes. The fair would give the style its name: Art Deco, when design historians of the 1960s were looking to define that era.



In the aftermath of the devastating 1931 Hawke's Bay earthquake, Napier was rebuilt in this modern style. Although it was cost-effective, the decoration could be as elaborate or as simple as the building owner desired or could afford. With decorations made of moulded shapes and low-relief decoration in concrete, the buildings were safe, unlike the heavy overhanging Victorian and Edwardian ornamentations that had collapsed during the 1931 earthquake, killing many.

However, for decades, these architectural treasures were underappreciated, overlooked, and at risk of demolition. Seeing the threat of demolition of these structures, concerned citizens recognised the need to protect Napier's unique cityscape.

In February 1985, a group of like-minded enthusiasts formed the Art Deco Group and promoted Napier's architectural heritage with the Take a Walk Through Art Deco Napier leaflet. Public enthusiasm surged with the premiere of Peter Wells' film *Newest City on the Globe*, and in 1987 the Art Deco Trust was formally incorporated.

The Trust flourished, and its guided walks and tours rose in popularity. In 1989, the Trust held the first Art Deco Weekend, which has since grown into the iconic Art Deco Festival celebrated every February, attracting thousands of visitors from New Zealand and across the globe.

In 1992, the Trust, supported by the Napier City Council with an operational grant, became a full-time operation, eventually moving to its present

location at 7 Tennyson Street, Napier, known as the Art Deco Centre. Today, the Trust is governed by an executive board and supported by a dedicated team of staff and over 120 volunteers.

In addition to providing advice for building owners and tenants regarding protection and preservation of Napier's art deco buildings, the Trust administers The Robert McGregor Heritage Fund in partnership with the Napier City Council.

The fund, named after the Trust's first President and Executive Director Robert McGregor (1940-2015) provides financial assistance to heritage building owners, and supports the Trust's mission of protection and preservation of art deco

Napier. Owners of buildings in Napier's Art Deco Quarter or CBD can apply.

In 2022, the Trust has also led the development of the Hawke's Bay Heritage Awards. The awards have been modelled on other regional heritage

awards programmes, which have been created in various regions across New Zealand. The second edition of the Heritage Awards will be held in Napier on Friday, 8 November 2024.

One of the Trust's most ambitious heritage projects to date is the project to restore the Napier (former) Women's Rest; a Category 1 heritage-listed building designed by J. A. Louis Hay in 1924, and opened to the public on Anzac Day 1926.

This building, like most of Hay's work, is heavily influenced by the Prairie Style of Frank Lloyd Wright. It served as a utilitarian war memorial and a sanctuary for mothers and children. It became a crucial community hub, particularly after the 1931 earthquake when it stood at the heart of Tin Town, a temporary commercial centre, effectively New Zealand's first mall.

The (former) Women's Rest underwent several transformations over the years, from a community centre to a ballet studio, and later housed the Citizens' Advice Bureau. However, seismic concerns led to its closure in 2013, and the building fell into disuse and disrepair. Recognising its historical significance, the Art Deco Trust embarked on a restoration project in collaboration with Napier City Council. This effort aims to not only preserve the building's original features and heritage integrity, but also transform it into a vibrant community facility... and a new home for the Trust.



ART DECO
TRUST



Bush photographs of immense value

From page 1:

the finals of the Design Institute of NZ Best Design Awards 2024 in three categories: Digital, Social Good and Toitanga. The awards will be announced on October 11, but I'm pleased these on-line and QR code accessed stories have already attracted a level of national recognition.

New Zealand's unofficial 'Defence Force Capital', Palmerston North has an extensive military heritage. Working alongside the Palmerston North Defence Heritage Advisory Group, council is involved in the upkeep of war memorials, cenotaphs and service graves, and backs Poppy Places research and signage. We support the monthly Midday Military History Presentations, and have significant input into Anzac and Remembrance Day commemorations.

Through our partnering with Te Manawa – Museum of Art, Science and Heritage and associated New Zealand Rugby Museum, the city sustains hugely important collections of taonga, art, artifacts, memorabilia, videos and photographs. For instance, the recent

high-profile auction to help fund the cataloguing, digitisation and display of the extensive Peter Bush photographic collection, gifted to the city by the Bush family, underlines the immense value of this unmatched sporting, political, social and cultural archive that spans half a century.

Through the latest Long Term Plan 2024 - 34, local history and heritage has also been enshrined in council policy with the aim of making it more prominent in our cityscape.

While supporting Rangitāne o Manawatū as kaitiaki of their historic cultural places and natural spaces, we also want collaboration with our wider community, and that includes paying attention to our remaining heritage and character buildings.

As these buildings are more-than-likely earthquake prone, we've set aside a Natural and Cultural Heritage Incentive Fund - essentially seed funding so building owners can explore improvement options.

It offers grants for things such as feasibility studies, planning,

strengthening and structural work. It can also apply to the conservation, maintenance, repair and restoration of significant buildings and memorials, or be used to support community-led heritage education, research and promotional projects, and help property owners maintain notable or landmark trees.

As part of our overall Heritage Plan, we want to establish a volunteer city heritage advisory or reference group that can contribute to city heritage planning by identifying priorities, providing technical advice and advocacy, as well as undertaking research.

We expect to work with some of the sector leads on a draft terms of reference before seeking expressions of interest soon. Our current progress as a city owes a great deal to the accomplishments of those who have gone before us. Our policy acknowledges that it's only through an appreciation and understanding of our past that we in the present can properly prepare for the future.

Introducing ... HPA executive members



Gary Russell has 25 years' experience researching international economic project developments with a focus on heritage destination.

His work has included economic growth and security strategies of the EU Atlantic border countries and the Baltic Sea countries, research work and implementing political stability policies in partnership with indigenous people of the Pacific.

In New Zealand and Australia, he has been a member of NZ Institute of Directors, NZ Historic Places, horticulture research and fruit export companies, tourism and hospitality, media outlets.

As a Waitakere City councillor, he

chaired committees and reviewed economic planning development projects, heritage strategy and policy plans.

On the ground experiences include working with the UK National Trust, NZ Institute of International Affairs, EU Heritage Interpreters Association, AUT, Surrey and Bournemouth Universities, and Bornholm Research Centre Denmark, Baltic Sea Commission.

Other areas of work as a journalist, writer, art gallery curator, orchardist, and in the role of a leadership mentor for governance roles for mediation, education and defence.

In his role as a judicial-trained Justice of the Peace, he oversaw new legal video processes for giving court evidence, JP training programmes, and implementing youth safe custody policies.

Through his own whanau, he has an understanding of cultural divide issues and developing pathways for economic development programmes.

"When one discovers the best in others it brings the best out in oneself."

Gary also has Adv. Dip. Education, MSc, and M.Phil.



Dr Bronwyn Labrum is Pou Ārahi Director of Whanganui Regional Museum. She has had a lengthy academic career teaching New Zealand history and has published widely about the material and cultural history of Aotearoa New Zealand, the history of fashion and the history of museums.

Her 2015 book, *Real Modern: Everyday New Zealand in the 1950s and 1960s* was shortlisted for the Ockham New Zealand Book Awards.

Her museum experience includes periods as a curator and Head of New Zealand and Pacific Cultures at Te Papa. She was also involved in the development of Ravenscar House Museum in Christchurch.

Construction under way within Carillon Tower

The Carillon Strengthening Project at Pukeahu National War Memorial has reached an exciting milestone now it is in the construction phase.

The project to strengthen one of New Zealand's most significant heritage buildings is complex. The Carillon is a musical instrument made up of 74 bells. It is housed in the Carillon Tower, the third heaviest carillon in the world, with 70 tonnes spread across 74 bells.

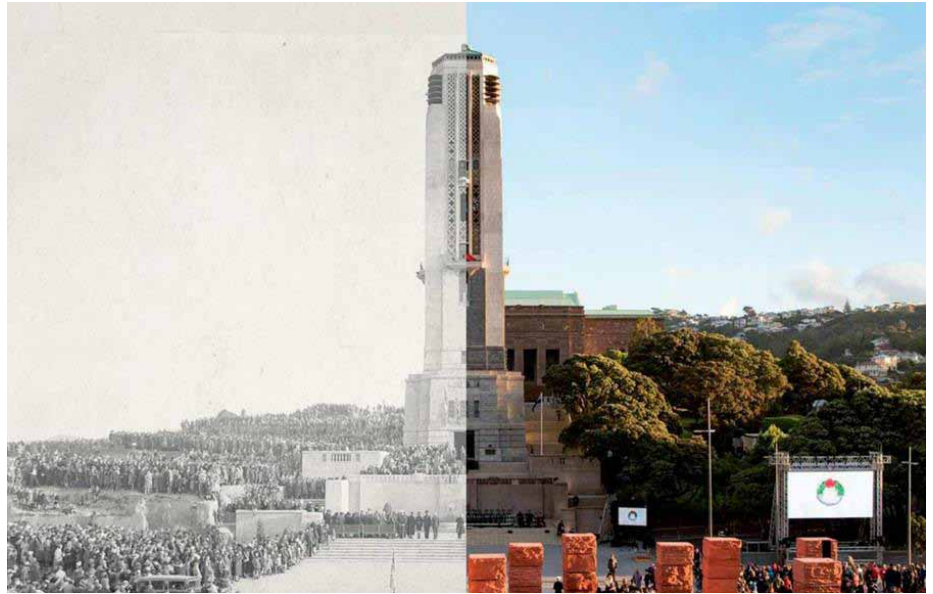
The 2021 cost was estimated at \$7.2M. This has increased to a forecast cost of \$9.5M with the addition of priority maintenance items and procurement of subcontractors.

Manatū Taonga Pou Mataaho o Te Hua Deputy Secretary Delivery and Investment Joe Fowler said construction started at the end of April 2024 with delivery of the site cabins and installation of fencing and scaffolding.

"Almost all the strengthening work is happening inside the tower and will not be visible when complete. The work involves steel reinforcing and installing Fluid Viscous Dampers (FVD) at the top of the tower with steel columns that run down the tower's four corners. The FVDs are like a car's shock absorbers and reduce the shaking of the building during an earthquake."

Besides the strengthening, the construction phase allows for maintenance including stonework, corrosion protection of the steel in the bell frames, new downpipes and patching roof leaks.

From May 2024, the tower was surrounded by scaffolding up to the eighth floor (roof level). While there will



The opening of the Carillon Tower in 1932 and the opening of Pukeahu National War Memorial Park to mark the centenary of the First World War in 2015.

be external scaffolding and hoarding walls around the base of the tower, most of the work will be internal.

Construction is projected to take 18 months from late April 2024, and the project is due to be finished towards the end of 2025.

Pukeahu National War Memorial Park remains open to the public but the National War Memorial building will remain closed to the public, except for ceremonies and commemorations.

Completed in 1932 as a national memorial to those who died in the First World War, the National War Memorial Carillon has since become a memorial to all New Zealanders who have lost their lives in military conflict. The Carillon stands 50m tall within Wellington's Pukeahu National War Memorial Park.

were cast, bringing the total number to 74. Of these, only the four large bells added in 1995 to mark the 50th anniversary of the end of the Second World War also bear inscriptions.



A few of the 74 bells, many of them inscribed, within the Carillon Tower.

The original 49 bells of the Carillon were given to commemorate the First World War. Each bears a name or inscription in memory of those to whom they were dedicated. Twenty-five bells have been added to the Carillon since the first bells



© Holmes

KEY :

- Fluid Viscous Dampers
- Steel reinforcing
- Tower framework



New Zealand's first Blue Plaque commemorating the Ashburton Railway Footbridge was unveiled in November 2017.

Nigel passes Blue Plaque baton on to HPA

By Nigel Gilkison, Chairperson, Historic Places Mid Canterbury (MO) & chairperson of Timaru Civic Trust (Associate)

Nigel Gilkison started the Blue Plaque initiative with Historic Places Mid Canterbury (HPMC) back in 2017.

Unfortunately, Nigel is heading back to the UK later this year and is handing over the reins to Historic Places Aotearoa to continue the administration of the New Zealand Heritage Plaque programme.

The first plaque produced was developed to commemorate the centennial of the Ashburton Railway Footbridge (pictured), which was unveiled in November 2017.

Since then, there have been many more Blue Plaques in many other locations around the country, including 15 in Mid Canterbury, 14 in South Canterbury and 14 in the Whanganui

District, along with plaques in Auckland, Wellington and Christchurch. With the latest six Blue Plaques recently produced by the Whanganui Regional Heritage Trust, the national total has now reached 50.

The Timaru Civic Trust have also just placed an order for three more plaques in South Canterbury.

HPMC have now formally gifted this Blue Plaques programme to HPA, enabling other heritage groups to make use of the scheme HPMC developed - with the hope of it eventually evolving into a de facto 'standard' for heritage building plaques across Aotearoa New Zealand.

The scheme has been designed to have the bulk of the work done by the local heritage committees (eg Member Organisations or Associate Members), but it is critical HPA has oversight to ensure consistency of the product is maintained across the country.

The project is entirely voluntary and is intended as a bottom-up, 'grassroots' approach to local built heritage promotion and protection, with the community and local heritage groups leading the way.

Nigel has produced a detailed 'Technical Info Booklet' (available from HPA), which includes all of the information MOs need to run their own blue plaque scheme. It not only describes the process for producing the plaques (historical research, plaque text, ordering, payment, procurement timeframes, delivery, etc), it also contains other useful information such as: options for funding; engagement with heritage building owners; acquiring permissions from local authorities; installation guidance, unveiling ceremonies, publicity and marketing, cleaning and maintenance.

The scheme is also supported by Heritage New Zealand Pouhere Taonga and it has been embraced by local authorities and heritage building owners across the country where the scheme has so far been piloted.

We see the Blue Plaques kaupapa as a great way for local heritage organisations to positively engage with their local communities and to produce a tangible, long lasting educational message about the value our local built heritage and the importance of preserving and promoting it.

The purpose of the plaques is to identify the building as an important piece of local built heritage and to tell the story of why the building is historically significant.

The initiative aims to increase the prominence of these important heritage buildings and to raise awareness of the value of retaining and maintaining our heritage spaces and places, as well as fostering greater public understanding and appreciation of our cultural heritage.

– from Blue Plaques 'Technical Info Booklet'



How-to guide for seismic assessment

By James Blackburne, BArch, FNZIA, A44

"Is my building earthquake prone, what does that mean, how do I deal with it?"

Many heritage buildings are likely to be deemed earthquake prone, especially those of unreinforced masonry and those built before 1935. More modern buildings are also not immune, and concerns have been raised about the variability in seismic assessments as has been played out in the media with several high-profile buildings in recent years.

This article aims to assist owners of heritage buildings deal with the requirement to determine if their building is earthquake-prone and how to manage the process of strengthening, if required.

The requirements relating to seismic assessment of potentially earthquake-prone buildings (EPBs) are provided for in the 2016 amendment to the Building Act 2004. Local councils are required to identify potential EPBs in their area and to have the owners undertake a seismic assessment to determine if they are earthquake-prone or not.

An earthquake-prone building is one that meets less than 34% of New Building Standard with respect to its structural capacity. It is important to recognise a building can be deemed to be earthquake-prone due to a part or parts – if a building parapet was assessed at 15% NBS and the balance of the building elements at 40%, the building would be considered earthquake-prone.

Currently, buildings identified as earthquake-prone in high seismic hazard areas are to be remediated or demolished within 7 ½ years for priority buildings (ie high-risk buildings as determined by their use and/or location on a busy key thoroughfare) and 15 years for other buildings. In low and medium seismic areas, these timeframes are greater. A further extension of up to 10 years for Heritage New Zealand listed Category 1 historic buildings can be applied for.

The present government is currently undertaking a review of the earthquake-prone building system. Pending completion of the review starting this year, including possible changes to the Building Act, the above deadlines have been extended by four years, with an option to extend by

a further two years if needed by the review process.

The different types of seismic assessment are:

Initial Seismic Assessment (ISA) a relatively quick and lower cost assessment but with a high degree of variability. Ultimately, may not be accurate or, more importantly, accepted by the relevant council. This is not usually suitable for a heritage unreinforced masonry building.

Detailed Seismic Assessment (DSA) - involves a more detailed analysis of the building, and depending on the size and complexity of the building can be relatively costly.

Targeted Seismic Assessment (TSA) could be undertaken when it's clear a building will be considered earthquake-prone, and the owner's aim is to retain and strengthen a building. This will likely cost less than a DSA, as a TSA will only assess the building elements to remain after any strengthening has occurred. There is little point assessing elements that are likely to be demolished as part of a strengthening/upgrade process. This can be particularly relevant if only one element of a building is causing the whole building to be deemed earthquake-prone. Targeted strengthening can then deal with the one deficient element and lift the whole building above the 34% NBS earthquake-prone threshold.

Over the past few years, the media has often reported on the variance between engineers with respect to their assessments. Owners are recommended to seek guidance from engineers with a proven track record with buildings of a similar structural type in their own area and, if the building is a heritage building, ones with experience of heritage buildings.

One cause of assessment variance has been due to inexperience with heritage structures. Some engineers have also incorrectly used the new seismicity factors in current draft Technical Specification TS1170.5 which MBIE have made clear should not be applied in the assessment of existing buildings.

A recommended process for owners to follow when looking at undertaking a seismic assessment is to:

1. Determine your objective for the building? eg
 - i. Do you want to just get to the 34%

threshold, or do you want to reach a higher figure? The higher the %NBS rating, the lower the earthquake insurance premiums are likely to be and the easier it may be to lease the building.

- ii. Are you focused purely on life safety or are you looking to also preserve building fabric? This is a key issue for heritage buildings.

2. Ask your proposed engineer to provide examples of their previous work. Check with the relevant local authority how likely they will be to accept a report from the engineer without the need for peer review. A council may provide you with a degree of confidence that the council believes the engineer to have the necessary skills and experience.
3. Ask your council to provide a copy of the Building Consent files as these will be required by the engineer. Some councils will charge for these, some will not.
4. Obtain a quote from the engineer to undertake an initial appraisal and an indicative price to undertake a DSA and provide strengthening recommendations. The initial appraisal should involve a search of council records, a site visit and concept strengthening solution(s).
5. Following the site visit, an experienced engineer should be able to provide recommendations for the next steps, eg,
 - i. is the building likely to be earthquake-prone? If yes, the focus of any assessment work should be on the strengthening solution and not just the rating.
 - ii. what are the likely low-strength elements, and is a targeted assessment the way to go.
 - iii. what is a possible concept for strengthening. An early concept can help guide the process and determine the next steps more clearly.
6. Consider getting a second engineer to work with your primary engineer to review and discuss the options. This can be cost-effective and reduce risks and variability of assessment. It can also be used to provide comfort to the council. Having engineers work together builds knowledge and expertise and is likely to save money in the long run.

Who ya gonna call..? Ring Paranormal Researchers

By Barbara Caisley
Paranormal

Researchers team members Ian Quigley and Barbara Caisley have held investigations within several historic venues including Napier Prison, the Chas. Short & Co Livery Stables in Thames and the Puhoi Centennial Hall.

During each investigation, the team records many hours of video and audio, and collects data (including emf levels, temperature, humidity, air pressure and vibrations) in targeted areas around the venue.

To elicit anomalous activity, team members often devise experiments specific to the location and/or reported unusual activity. Attempts to communicate with any energies of spirits are also made.

Team members follow Scientific Method during investigations and all files, information, data and results are then carefully reviewed and collated to be closely analysed, discussed, and shared with relevant parties before being filed for future reference.

The files remain confidential unless specifically requested to the contrary. At the outcome of each investigation, the collated information taken during the investigation is used to produce a written report and, if appropriate, a short video is produced.

Team members had the privilege



Barbara Caisley

of not only investigating at Napier prison but have also hosted several events there for small numbers of the public.

The events included presentations on different aspects of the paranormal, followed by attendees joining the team in an

investigation. These events made several thousand dollars each time and all monies were donated straight back to the prison.

The team was often trusted to stay overnight on the premises and were able to have access to all areas. During its various investigations at the prison, the team noted a number of anomalous phenomena including items being thrown, moving shadows and dark forms being seen, investigators being touched and prodded, unusual energy fluctuations recorded, the sound of the heavy prison doors being opened and/or closed when there is no door moving at the time, unexplained voices and screams heard (and sometimes recorded) and footsteps heard where no-one is present.

The Chas. Short & Co. Livery Stable building in the Grahamstown precinct of Thames is another building the Paranormal Researchers team has had the privilege of investigating.

The team was fortunate to be given the keys to this 135 year old building to enable unrestricted access. As is the norm, team members followed the methods and protocols noted above.

During an eight-hour investigation, a light anomaly was noted and later an unexplained voice was heard and recorded. An evp (electronic voice phenomena) was also heard during a review of the team's audio recordings. A session with a "spirit box" device resulted in one of the investigators names being called.

The 125-year-old Puhoi Centennial Hall was the site of several overnight investigations by the team.

Paranormal Researchers followed standard investigation procedures and noted a number of uncommon occurrences during their time in the hall.

An unusual number of malfunctions with equipment were noted during the investigations. Cameras turned themselves off, new batteries in devices monitoring key areas were continually drained, odd noises which sounded like equipment was being tapped or tampered with were recorded.

The dark figure of a man was observed in the foyer of the building although no-one else was present apart from the team.

In the early hours of the morning, a strange popping sound awoke team members several times.

Despite a thorough search, a source for the noise was unable to be found. This investigation is ongoing.

Advice is to seek architect with heritage experience

From page 8:

7. Get guidance from an architect/designer with heritage experience, especially one who has been involved in the strengthening of similar heritage buildings in your area. Sympathetic structural strengthening can be tricky and there will undoubtedly be other factors that need to be taken into consideration when strengthening a building, as it can be intrusive and the elements around the new structure need to be made good.

Often the structural remediation can be relatively inexpensive, while extra remedial work to the building finishes is more expensive. This could

include recarpeting, painting and general building alterations. Speak to your accountant to determine what costs can be claimed as repairs and maintenance versus what work needs to be capitalised.

8. Contact Heritage New Zealand Pouhere Taonga for advice early in the process. This can save a lot of problems if a resource consent is required.

Key summary points:

Under legislation, seismic assessments of potential EPBs can be requested by local councils. A full DSA is not necessarily required to meet regulatory requirements.

For heritage buildings, it is essential

assessment, strengthening and concepts are undertaken by engineers with relevant knowledge and experience.

Developing a good working relationship with your professionals is important, as is being proactive. Don't leave the key steps in the process until the last minute, as you may find that you are boxed into a corner.

More comprehensive assessment and engineering input may be required upfront where the intent is to proceed to strengthen work within a short time.

This article has benefitted from input from Dave Brunson, Distinguished Fellow of Engineering New Zealand and Life Member of the NZ Society for Earthquake Engineering. HPA is also grateful to the Hastings District Council for other input.

Focus on landscape gardeners a conference topic

Laying Out. A Short Timeline of Hawkes Bay Gardeners 1850-1950.

By John P Adam

Introduction

In part two of what was originally proposed to discuss "public garden design competitions...", I will focus instead on gardens designed by qualified landscape gardeners, specifically those who immigrated to Hawke's Bay, what pre-immigration professional skills they acquired and then applied privately within their whanau or client network.

This is background to my presentation to the November Heritage Conference in Napier focusing on the horticultural career of John Nairn (1791-1883).

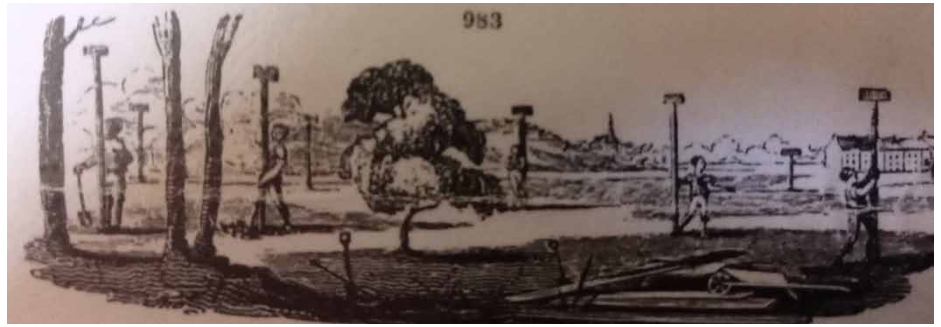
Nairn was discovered during initial research for this subject and through my parallel family research about the Collins family – genealogically linked to the Nairns – and my Percy family, both living from the 1850s at Te Ore Ore, near Masterton.

Nairn and his family (two sons trained as gardeners) created several gardens in Taranaki where

immigrant clients' gardens were probably designed for the likes of Captain Henry King (1783-1874) and members of the 1843 Taranaki Horticultural Society that Nairn belonged to. The resulting landscape legacy saw many orchards planted in New Plymouth, Whanganui and Porerere, central Hawkes Bay near Waipukurau, where the Nairns lived from the 1860s. The family lived on Māori-owned and contested lands at several locations.

Nairn's career began in 1801 in London at age 10. His grand uncles likely assisted in his training. Grandfather Alexander Nairn (1741-84) was a gardener in London at 'Garden Springs' and his brother-in-law William Dean (1767-1831) lived long enough to educate his great nephew.

Two generations of three (including two sons) of the John and Eliza (nee Liston) Nairn family as qualified gardeners arrived in Taranaki on the *William Bryan* in 1840-41. There's no evidence any of the three Nairns with horticultural pedigrees, went into business as nurserymen or



Levels being organised for a garden's construction. Louden, JC & Mrs (Eds) 1860. An Encyclopedia of Gardening.

public gardeners. How did they apply their landscape design skills?

Canterbury Garden historian Matt Morris critiqued the over-emphasis of the design practice in the published

New Zealand garden history literature as against a vernacular garden-making heritage "not focused on design". Yet the most qualified gardeners had skills to design gardens using a plan, detailed reports and sometimes contract construction specifications. That process is missing from published New Zealand landscape literature. New Zealand art historians

have never published the historic garden plan as a work of art.

I began research on New Zealand landscape gardeners during the Covid 19 lockdown when gathering information on the first 50 landscape gardeners of Aotearoa/New Zealand.

The Hawke's Bay Colonial 1850s rural landscape was initially a temporary leased space, individually called a Run with differential government rental paid on un-agricultural vs agricultural land while 'squatting' in temporary dwellings for extended years enclosed by live hedges and fences to mark and protect valued orchard and vegetable gardens.

The Nairns eventually built an Italianate construction style homestead embracing picturesque views from the house with a turret and wrap-around garden terraces and evergreen trees – a mixture of Australian, New Zealand and European.

Since the 1980s, garden historians from Australasia have used Juliet Ramsay's valuable guide *Parks, Gardens and Special Trees. A Classification and Assessment Method for the Register of the National*

Estate to interpret historic garden types and eras from the physical site using historic photographs, paintings and garden plans. Some of these plans have survived in public archives here. The design process summarised below is borrowed from Stuart Read's *History of Garden Design Using Native Plants 1788 - Now Design is? & why it might matter.*

Ranges of types (landscapes/parks/gardens)

Eras – creation/changes(fashion)

Reasons – function/ornament

Built elements – walls, steps, paving, ornaments

Planted elements – trees, shrubs, climbers

Sustainability – shelter, food, fibre, solace, meaning.

The colonial gardener required a network of employers and garden built and planted elements that would have been limited but accessible from the likes of Sydney and Hobart from the 1840s. These places even created their own Australasian horticultural eras/fashions for regional plants from Tasmania and NSW.

Why the limited gardens made by the Nairns? Considering extended family ties and the places they lived, there were many opportunities to create ornamental landscapes and food gardens for their extended family we know immigrated. The Nairns were related to the Gilbertson and Collins. John's son Francis Edward Nairn inherited his Collins estates from his John Collins relative. John Nairn the qualified gardener and his sons became pastoralists. The management of livestock, or 'husbandry', embraced the origins of landscape gardener training. European agriculture reform demanded the enclosure and individual ownership of lands that were once commons. Hawke's Bay's agricultural landscape was also being enclosed.

My conference talk will reveal the names of the local gardeners and their employers and illustrate the places they designed and some images of their garden plans.

Acknowledgements: Jane Matthews, Auckland; Stuart Read, Sydney; Pamela Ballantyne and Elizabeth Pishief, Hawkes Bay.



Go and see the country before heading abroad

I read a story recently that mentioned New Zealanders are travelling overseas on holiday in greater numbers than in previous years.

Whenever I read this, I think of the 1980s NZ Tourism marketing slogan, 'don't leave town 'til you have seen the country'.

It is time we again yelled this loudly. While doing this we will entice you to visit your heritage at home in New Zealand.

We have a fantastic Tohu Whenua-Landmarks programme designed for heritage tourism and education. Check out the website <https://tohuwhenua.nz/>

Tohu Whenua are the places that have shaped our country. They are in stunning landscapes and properties that tell great heritage stories, and they offer our best heritage experiences.

What should you do on holiday? The user friendly travel brochures in Tohu Whenua guide you through regions of New Zealand, currently covered by the programme.

Te Tai Tokerau Northland

- interweaving journeys, tell the stories of our beginnings. These are places where both our Māori and European ancestors arrived, centuries apart, and where their identities were defined.

Early encounters, cultural differences, challenges and aspirations were the hallmarks of understanding how we became New Zealanders. Stand where our people first engaged, feel the tensions and curiosities, apprehensions and partnerships, and appreciate why our journey continues today.

Te Tai Poutini West Coast

- tells stories of the hardships endured for our country's most prized resources. A region known for its incredible beauty and rich bounty, these are the places where our people's limits were tested and rewarded. Stand where some of our most significant industrial history unfolded in the pursuit of gold and coal, feel the wairua in the heart of Te Wai Pounamu's jade sources and appreciate our taonga and the journeys that led us to them.

Otago - tells stories of the region's early settlers. Explore ancestral landscapes, tour homes of invention and innovation, and discover places that mark some of the cornerstones of New Zealand's economic livelihood. You are guaranteed to explore and learn about our country through Tohu Whenua.

At Heritage New Zealand Pouhere Taonga we have fantastic heritage properties that are well captured though

maps and descriptions at <https://www.heritage.org.nz/places/our-properties>

You will see an array of heritage properties and places that are available for you to visit, explore, experience and at some be very well 'fed and watered'. You will no doubt better understand the history of New Zealand, you will be entertained, and enthralled, no matter your age and stage. Just a few references from south to north to 'whet your appetite' and encourage you to explore further.

Are you into high-end fashion sold from a Category 1 heritage building that operates as a modern shop? You must visit the former Masonic Hall at 32 Kelvin Street, Invercargill – built in 1864 and used as the Southland Provincial Council Chambers. This modest structure is one of only two buildings associated with New Zealand's short-lived system of Provincial Government.

Are you wanting to visit the workplace of the Olympic gold medal winning Finn Butcher's Nana? You must visit the Ophir Post Office in Ophir and our wonderful Val Butcher (Visitor Host and Nana to Finn) will help you experience a past activity of writing a postcard and sending it through the post. Remember those days?

Just up the road from Ophir is Hayes Engineering at 39 Hayes Road, Oturehua. A property built with ingenuity as evidence through the stables, a dairy, workshop and homestead where shafts and pulleys worked their magic. The award-winning fare from the café is experienced by many cycling the Central Otago Rail Trail, so why not join them.

Head out to the east coast and visit both Clarks Mill (SH1, 1017 Alma-Maheno Highway) and Totara Estate (SH1, 565 Alma-Maheno Highway) – industrial and agricultural New Zealand at the fore.

A working flour mill, one worth visiting on an open day when a fantastic group of heritage volunteers crank up the mill and get it working. At Totara, we celebrate each 15 February the National Lamb Day and the anniversary of the ship Dunedin when it left Port Chalmers for London in 1882 carrying the first shipment of sheep and frozen meat farmed at Totara Estate. The shipment arrived 98 days later in England, and New Zealand began



HNZPT Chief Executive Andrew Coleman.

trading agriculture to the world.

The east coast of the South Island has a significant array of rock art sites, one being Te Manunui Rock Art Site at 215-275 Frenchmans Gully Road, Maungati. The distinctive and rare bird figure is celebrated

in the name gifted to the site by tangata whenua in 2007. They believe the bird figure Te Manunui (the Great Bird) represents New Zealand's now extinct Pouakai or the Haast eagle that was associated with the Canterbury area.

We all know the construct of building foundations, right? Well, a visit to Fyffe House at 62 Avoca Street, Kaikōura will amaze you with something quite unique. The house was literally built on the back of whaling – the initial single-storey cottage rests on piles made from the vertebrae of a mighty Tohorā (southern right whale).

Wellington has many heritage properties, Antrim House, Old Government Buildings, Old St Pauls, Chevening, the Pencarrow Lighthouse and Turnbull House.

Continued on page 13

Member Organisations of HPA

- | Cargill's Castle Trust, Dunedin |
- | Historic Places Auckland |
- | – Tamaki Makaurau |
- | Heritage Tairāwhiti |
- | HP Hawke's Bay |
- | Heritage Taranaki Inc |
- | Whanganui Regional Heritage Trust |
- | HP Manawatu-Horowhenua |
- | HP Wellington |
- | HP Canterbury |
- | HP Mid Canterbury |
- | Taonga Tū Heritage Bay of Plenty |

Associate Members

- | Art Deco Trust, Napier |
- | Christchurch Civic Trust |
- | Civic Trust Auckland |
- | Remuera Heritage Inc |
- | Patea Historical Society |
- | Heritage Wairarapa |
- | Kinder House Society |
- | Point Chevalier Social Enterprise |
- | Trust |
- | Sth Canterbury Historical Society |
- | Timaru Civic Trust |

Remembering IX Hawke's Bay Regiment

By Dorothy Pilkington

A new plaque commemorating the IX Hawke's Bay Regiment was dedicated at the Napier War Memorial last month.

The roots of this regiment go back to 1863, when the Napier Rifle Volunteers were formed as the war in Taranaki caused disquiet among locals. In 1898, the group became the 3rd Battalion Wellington (East Coast) Rifle Volunteers then, in 1910, the 9th Regiment (Wellington East Coast Rifles). It was in March 1914 that the Roman IX Hawke's Bay regimental badge, and this form of the numeral is used on the new commemorative plaque at the Napier War Memorial.

The regiment was amalgamated in 1964 to become the 7th Battalion (Wellington, City of Wellington) and (Hawke's Bay) Battalion of the Royal New Zealand Infantry Regiment and in 2013 with further amalgamation became 7WNHB and 5 (Wellington West Coast Taranaki) Royal New Zealand Infantry Regiment known as the 5/7 Battalion.

Speaking at the 8 August dedication ceremony, Ken Foote – retired New Zealand Army Reserve Brigadier, ex-commanding officer of 7 Wellington Hawke's Bay Battalion of the Royal New Zealand Infantry Regiment 1989–92, and current chair of 7WNHB Regimental Association – explained that former members of IX HB Regiment formed the Hawke's Bay Regimental Association at the time of the 1964 amalgamation. This association has since been wound up, and a fund for maintaining and memorabilia was passed to the current



A new plaque commemorating the IX Hawke's Bay Regiment was unveiled in early August.

7WNHB Regimental Association.

Members decided "there was no better way to use this bequest than to commission a plaque to remind, or make aware, all residents and visitors to this memorial, of all those who served in the Hawke's Bay Regiment in the name of their country."

The choice of the date, August 8, to dedicate the plaque draws on the role of the men of the 9th (Hawke's Bay) Company of the Wellington Battalion of the New Zealand Infantry Brigade in the battle of Chunuk Bair. Under the command of Lieutenant Colonel William Malone, the Wellington Battalion captured the highest point in the mountain range, fighting off wave after wave of Turkish attacks. Chris Pugsley in his biography of Malone

in the *N Z Dictionary of Biography* describes the terrible loss of life suffered by the Wellington Battalion that day, including the death of Malone himself: "... at midday some Auckland Mounted Rifles got forward to reinforce Malone's men. At 5 p.m. supporting artillery fire, probably from a New Zealand howitzer battery, burst over Malone's trench and killed him. By then the Turkish counter-attacks had ceased. That night, when the Wellingtons were relieved by other New Zealand units, some 70 of the battalion's 760 men remained."

Outlining this horrific battle at the dedication, Ken Foote observed "Because Chunuk Bair was lost again within a day of the remnants of the Wellington Battalion being replaced, and ultimately the whole Gallipoli campaign was lost, what those Hawke's Bay soldiers achieved that day was little acknowledged.

"Now, recent reassessment has recognised this as one of the epics in New Zealand's military history.

"Thus, the 8th of August has been adopted and maintained as the regimental birthday to commemorate and pay tribute to that achievement."

Now the IX Hawke's Bay Regiment's badge will sit alongside the Roll of Honour at the Napier War Memorial that includes the names of all those men and women with Napier associations who have given their lives in the service of the country – including the members of the IX Hawke's Bay Regiment in its various iterations.





New Zealand Infantry Soldiers at an annual camp, Oruawhoro, 1911

Did lemon squeezers start in bay?

Were Hawke's Bay men among the first to wear the lemon squeezer?

Intriguingly, the young men in the IX Hawke's Bay Regiment hit the headlines just prior to the outbreak of World War I, during one of the camps that had been held regularly since the introduction of the territorial system in 1910.

The camp at Oruawhoro, Takapau, in May 1914 was, apparently, not well resourced, with food not as plentiful as men on a physically demanding military exercise need.

There was a shortage of uniforms, and the exigencies of rail transport meant they would have more days in camp than prescribed under the regulations.

As rain poured down day after day, the men experienced what one newspaper describes as "an unenviable time."

Fed up after yet another march through a downpour, the Hawke's Bay men rebelled.

Described in the press as "military rioters" and "RedFeds," after "the mob" was subdued by a picket of mounted police with fixed bayonets, a group was finally able to voice their grievances to Colonel Chaytor, and some small concessions were made.

Some believe that one of the changes that resulted was William

Malone's instruction to the men to make four dents in their army issue hats, so that the rain could run off.

However, although all agree that it was William Malone who had the idea, accounts vary about when the hat was first restyled.

According to one version, in 1911 Malone was appointed to command the 11th Regiment (Taranaki Rifles) and at their annual camp he introduced the lemon squeezer as the regimental hat. Malone's purpose was both to mirror the outline of Mt Egmont (which was on the 11th Regiment badge) and allow for run-off in the rain.

In yet another account, it is suggested that as far back as the South African (Boer) War Kiwi soldiers were restyling their fore and aft dented hats, and turning down the upturn on the side of the brim to better suit the climatic conditions.

If the date is correct on the photograph used in a history of Oruawhoro compiled for the New Zealand Historic Places Trust in 1978 then lemon squeezers were being worn several years before the Hawke's Bay boys "rioted" in 1914.

Probably, there is a grain of truth in each of the explanations and who wore the first lemon squeezer will never be known.

Battle sites and ruins tell stories of our country

From page 11

Have you wondered what defensive buildings were like in the 1860s? A visit to the Upper Hutt Blockhouse in Trentham, Upper Hutt will allow you to see and learn about a fortified defence building. It was built in the Wellington area in response to a perceived threat of Māori attack on Pākehā settlers. One of the first recorded examples of statutory protection of a historic building in New Zealand in 1916, the building has been a police house, courthouse and residence.

New Zealand has a surprisingly high number of battle sites, have you visited one? The Te Pōrere redoubts (State Highway 47, 26kms southwest of Tūrangi) and associated rifle pit are the physical remnants of the battle of Te Pōrere that occurred between government forces and Te Kooti and his supporters on 4 October 1869. The government forces attacked the rifle pit and lower redoubt before proceeding towards the upper redoubt. The upper redoubt was taken relatively quickly but Te Kooti managed to avoid capture or death by escaping into the nearby bush. The battle of Te Pōrere resulted in 41 casualties - 37 of Te Kooti's supporters were killed, whilst the government forces only suffered four losses.

Much of our history is told through ruins. Edmonds Ruins (Edmonds Road, Kerikeri) are the remains of a homestead and farm built by the first European settler family on south side, Kerikeri Inlet.

The mortared stone house was built by John Edmonds and his sons (1840 -58) after his employment by the Church Missionary Society was terminated. We have upgraded the interpretation at the site. We have also taken cuttings from the original trees, germinated them and planted them around the property. We have made no attempt to reconstruct because the ruins are the important part of the historical stories.

We hope you see the merit in planning your heritage holiday and encourage others to do the same. We have a long and deep history in New Zealand, something that when we have archaeological recordings back to 1200 and 1300 is a surprise to many, that is worth exploring.

Don't leave town 'til you've seen the country.

HPA president addresses RMA reform

From page 1:

district plans, regional policy statements and the New Zealand Heritage List/Rārangī Kōrero. We said:

RMA reform & heritage lists/schedules

1. I am writing to you in respect of the request by the Mayor of Wellington City Council, Tory Whanau, for a law change to enable local government to use a council resolution process to delist heritage buildings from district plans, regional policy statements and the New Zealand Heritage List/Rārangī Kōrero. That proposal was set out in the Mayor's letter to you dated 26 March 2024. I understand that you are taking advice from your officials on this matter.

2. First, let me introduce myself and my organisation. I am the President of Historic Places Aotearoa. Historic Places Aotearoa is an independent non-governmental organisation representing heritage nationally to save it for our future generations. Our aims include preserving historic places, raising awareness and appreciation of heritage values, and helping local and regional organisations to promote heritage in their areas.

3. We wish to clarify the difference between listing and scheduling a heritage place. Heritage New Zealand Pouhere Taonga lists places of heritage value on the New Zealand Heritage List/Rārangī Kōrero and has an advocacy role in protecting these places. Places on the New Zealand Heritage List/Rārangī Kōrero are identified, but not protected, until they are scheduled on a council's district plan accompanied by appropriate policies and rules. Councils are strongly encouraged to schedule on their district plans all heritage places or items listed by Heritage New Zealand Pouhere Taonga on the New Zealand Heritage List/Rārangī Kōrero, but this is not a mandatory requirement. Councils may also schedule historic heritage places on their district plans that have not been listed on the New Zealand Heritage List/Rārangī Kōrero.

4. Historic Places Aotearoa wishes to take a positive and constructive role towards proposed law changes to the heritage listing process. We are not in principle opposed to change and appreciate that improvements can be made. We are also sympathetic to the Mayor's concern that reviewing and potentially removing a heritage listing can sometimes be an uncertain, costly and time-consuming process.

5. Our historic heritage provides

economic and environmental benefits to Aotearoa New Zealand. The Arts, Culture and Heritage sector contributes \$14.9 billion to the economy annually. Moreover, our existing buildings are carbon neutral compared to demolition and reconstruction.

6. Any changes to the heritage listing/scheduling processes need to reflect the significant value that historic heritage provides to Aotearoa New Zealand. The Resource Management Act 1991 (RMA) recognises that the protection of historic heritage is a matter of national importance. Heritage buildings and historic places are a cherished taonga and a part of Aotearoa New Zealand's history and culture. They have lasting value and provide evidence of the origins of New Zealand's distinct society. Historic places that have been identified and included on heritage schedules are there for a good reason, having been subject to a detailed research and evidence-based process and reflecting public and community feedback.

7. In our view, any reforms to the heritage listing processes need to be based on the following principles:

- a. Evidence-based decision-making
- b. Consultation and involvement of those with relevant expertise and knowledge
- c. Recognition of community values and aspirations
- d. An efficient and adequately resourced process.

8. There are two aspects of the heritage listing/scheduling process that the Mayor's letter asks to be reformed to enable decisions by council resolution. These are (a) the process for local government to schedule (or de-schedule) a heritage building in a district plan or regional policy statement under the RMA, and (b) the process for listing or reviewing an historic place on New Zealand Heritage List/Rārangī Kōrero under the Heritage New Zealand Pouhere Taonga Act 2014.

9. We will now explain our position on whether any legislative changes are required to address the Mayor's concerns.

(a) Reforms to the RMA heritage scheduling processes

10. The premise of the Mayor's letter is that councils "currently lack the tools" to re-evaluate buildings that have been heritage scheduled in district plans. Her Worship suggests that a new legislative "tool" is needed by giving councils the

power to remove heritage scheduled places in their district plans by way of a council resolution.

11. Historic Places Aotearoa does not agree that councils currently lack the tools to re-evaluate heritage schedules, or that a new council resolution process is needed. It is unclear how the Mayor's proposal is any different from the tools that are currently available under the RMA. Any decision to change a district plan is already made by way of council resolution, following a process which involves public notification, submissions, and hearings.

12. The nub of the Mayor's concern seems to relate more to the submissions and hearings processes that form part of a Schedule 1 plan change process. But these are important and should not be circumvented. Submissions and hearings ensure that the process to remove or amend a heritage place in a district plan schedule is evidence based, involves the community, and reflects its values.

13. If the Mayor is asking for a quicker process to review and amend/remove heritage scheduled places, then there are already processes in the RMA toolbox for more efficient plan changes. The most obvious example is the streamlined planning process in Part 5 of Schedule 1.

14. Under the streamlined process, a council can apply to the Minister to use the streamlined process if the circumstances set out in section 80C are met—for example if the plan change is urgent, or required to meet a significant community need, or a more expeditious process is required for other reasons. If the Minister allows the use of the streamlined process, then the plan change is publicly notified, following which there is an opportunity for public submissions. Hearings are not required unless the Minister directs otherwise. The local authority can appoint independent expert commissioners to review the submissions and prepare recommendations. The local authority then approves those recommendations and refers them to the Minister for a final decision. Appeal rights beyond that are very limited.

15. The streamlined planning process may be a useful way of enabling councils to review heritage scheduled items in their plans in a more efficient manner, while retaining a process that involves the important features of:

- a. Evidence-based decision-making

To page 15:

Outlines concerns and offers options

From page 14:

b. Consultation and involvement of those with relevant expertise and knowledge, and

c. Recognition of community values and aspirations.

16. A further benefit of using the streamlined planning process for heritage schedule reviews is that the Minister would act as gatekeeper and final decision maker in the process and can therefore maintain oversight and ensure that the truncated process is only used where there is a compelling justification.

17. This proposal would only require some limited and targeted amendments to the RMA. The streamlined planning process provisions set out in Part 5 of Schedule 1 are already in place and do not require amendment. But there would need to be some minor amendments to the criteria in section 80C so that a proposal to amend or remove a heritage place on a schedule would qualify to use the streamlined process.

18. Historic Places Aotearoa considers that utilising the existing streamlined planning process is a much more appropriate way of addressing the Mayor's concerns about the efficiency of reviewing heritage schedules. It is simply not necessary to legislate for a totally new "council resolution" procedure, or to exclude the important safeguards of public participation and evidence-based decision making.

(b) Reforms to the Heritage New Zealand Pouhere Taonga Act 2014

19. The Mayor's letter also asks for councils to have an ability to remove listings from the New Zealand Heritage List/Rārangi Kōrero by way of a council resolution.

20. The New Zealand Heritage List/Rārangi Kōrero is maintained by Heritage

New Zealand Pouhere Taonga, which is an autonomous Crown Entity. Historic places are entered on the list after a detailed and evidence-based process. Heritage New Zealand Pouhere Taonga is a specialist body with expertise and experience in assessing historical or cultural heritage significance and values.

21. Historic Places Aotearoa does not support giving local authorities a decision-making function for the New Zealand Heritage List/Rārangi Kōrero. That would undermine the independence, mana, and expertise of Heritage New Zealand Pouhere Taonga.

22. There is already an ability in the current legislation for a council (indeed any person) to request a review of an historic place on the New Zealand Heritage List/Rārangi Kōrero. Section 78 of the Heritage New Zealand Pouhere Taonga Act allows a person to apply for a review and prescribes a 12-month timeframe for Heritage New Zealand Pouhere Taonga to make decisions on such an application. An application can only be rejected if it does not disclose sufficient grounds, or if the relevant entry has been reviewed within the preceding three years.

23. The Mayor's letter does not refer to this option. But it is a tool already available to councils to have heritage listings reviewed in appropriate situations.

24. We understand that there may be some concerns about the time that it takes Heritage New Zealand Pouhere Taonga to complete reviews of heritage listings when requested. The better way to address this concern is to ensure that Heritage New Zealand Pouhere Taonga is operating efficiently and is adequately resourced, rather than to circumvent its high-quality evidence-based processes.

Conclusion

25. Historic Places Aotearoa wishes to take a positive and constructive role towards proposed law changes to the heritage scheduling process. We are sympathetic to the Mayor's concern that reviewing and potentially removing a heritage scheduled item can at times be an uncertain, costly and time-consuming process. There are opportunities to improve current processes.

26. We have concerns about the Mayor's proposal to allow heritage scheduled items to be removed by way of a council resolution. That would mean abandoning the important safeguards of public participation and evidence-based decision making.

27. In our view, there are better ways of improving the efficiency of current processes. One option would be to enable councils to use the streamlined planning process to review and amend/remove heritage scheduled items in their district plans. Another option is for councils to use the existing legal pathway to request that Heritage New Zealand Pouhere Taonga undertakes a review of historic places on the New Zealand Heritage List/Rārangi Kōrero.

28. We would welcome the opportunity to meet with you and/or your officials to discuss the Mayor's letter and our proposals further. We anticipate that you will be taking these matters into account in your review and reform of the RMA. We look forward to playing a positive and constructive role in the policy development of any reforms to the heritage listing processes.

We will attend a meeting with Minister Bishop on 7 October and provide you with feedback.

Minister Chris Bishop replies:

Thank you for your letter of 16 July 2024 about Wellington City Council (WCC) Mayor Tory Whanau's correspondence to my office regarding heritage matters under the Resource Management Act (RMA).

I note your concerns that a Council resolution procedure as proposed by Mayor Tory Whanau, could undermine principles of public participation and evidence-based decision making.

I also note your suggestion that a streamlined planning process could

enable quicker plan changes while retaining principles of evidence-based decision-making, public participation, and oversight that ensures that the process is only used where there is compelling justification. I thank you for your valuable input regarding Councils' present avenues for evaluating heritage schedules.

Heritage protection under the RMA imposes unique costs and barriers that can prevent the use and development of heritage places. It also impacts on

owners' property rights. Because of this, I have directed my officials to provide options that could make it easier to de-schedule heritage buildings from local authority plans. Later this year, I hope to announce changes to better enable councils to manage heritage.

I would be pleased to attend a meeting with you. My office will be in touch to arrange this. I look forward to your continued engagement on this work. Thank you for your correspondence on this important matter.

Introducing Museum of Archaeology Ōtautahi

By Katharine Watson

Archaeological data. What do we do with it all? In Aotearoa, such data is typically recovered as a result of the archaeological authority process, administered by Heritage New Zealand Pouhere Taonga (HNZPT).

Archaeological sites are protected by legislation because they're a public good – a significant and irreplaceable source of information about our past.

As such, not only does the legislation protect archaeological sites, it facilitates the recovery of information from archaeological sites that are going to be damaged or modified. It does not, however, protect the data recovered and nor does it fully protect the material recovered. And while the results of archaeological investigations are made available through archaeological reports, these aren't particularly accessible to the general public and are, necessarily, site specific. They don't synthesise data, they don't generally seek to answer big picture questions and the data contained in them is essentially locked in a pdf. Yet such synthesis and analysis are some of what is required to truly realise the public good of archaeological investigations.

The Christchurch Archaeology Project <https://www.christchurcharchaeology.org/> was born out of these concerns, specifically as they relate to Ōtautahi Christchurch and the large quantities of archaeological data generated as a result of the Canterbury earthquakes of 2010 and 2011.

The volume of archaeological work during this time was unprecedented, with almost 4000 earthquake archaeological authorities issued and close to a million artefact fragments recovered. The resulting archaeological archive (physical materials recovered from archaeological sites and the associated archaeological and historical data) is a unique window into Canterbury's past, with the potential to provide significant insights into Christchurch's story. But the form of the archive, scattered across disparate physical and digital locations, made this nigh on impossible. To solve this problem, to make the data



MoAŌ founders (L-R), Jessie Garland, Hayden Cawte and Katharine Watson.

accessible and to enable a whole range of people to explore Ōtautahi's past, we established the Museum of Archaeology Ōtautahi (MoAŌ).

<https://museumofarchaeology.org/>

MoAŌ is an online database of archaeological material, providing access to archaeological data through two interfaces. We think of these as a public interface and a researcher interface, but both are freely available to all, although the researcher interface requires users to sign up and have login details.

The public interface contains a curated subset of the data, including basic information about archaeological sites (location, site type, period of occupation), archaeological features (again, type and period of use) and artefacts. There's also historical information about the people and organisations associated with each site and/or feature, and it's possible to follow the connections between these people, organisations and places. We've tried to make this data as user-friendly and image-rich as possible, to ensure it's engaging, and to facilitate artefact identification. The public interface is searchable using a range of categories but there is, as yet, no map to facilitate searching.

The researcher interface <https://researchdata.museumofarchaeology.org/> presents all of the data, essentially in a warts and all fashion. This data is drawn directly from the spreadsheets used to upload the data to MoAŌ. It includes everything from the archaeological authority number, when the archaeological work took place, the dimensions of each feature, the site's stratigraphy and all of the nitty-gritty details of the artefact analysis.

There are no images in the researcher interface. The data is presented in spreadsheet format, and can be filtered and exported. The latter functionality allows the researcher to manipulate and analyse the data for their own purposes.

MoAŌ is still very much a work in progress. To date, we have entered data from 356 projects. This encompasses 470 archaeological sites, 2345 people and over 19,000 artefacts. There's still a lot more to go. Further, this data

only relates to European archaeological sites, and only those sites with below ground archaeology. Consultation with the relevant Ngāi Tahu papatipu rūnanga is required before data from sites of interest to Māori can be entered, and this is about to get under way.

Work to enter the first buildings archaeology is also in progress. In addition, the historical data in MoAŌ is in many ways incomplete: all the data currently in MoAŌ was extracted from final reports, with no additional research or analysis undertaken. As such, the information in MoAŌ about any given individual is only that which was in the report. Often, this is little more than a name. Nor are there images for all artefacts or sites. Finally, for data entry, work is under way with Underground Overground Archaeology to establish a process whereby they enter data into MoAŌ as reports and projects are completed. Not only is there more data entry to be done, but also the website requires enhancements and refinements (including the aforementioned map). So, yes, more funding is required...

Initial database build, construction and data entry was funded by a Manatū Taonga Ministry for Culture and Heritage grant. The database and website were built by Christchurch firm Intranet; database designed by Great Scott, another Christchurch business. Data entry was undertaken by our data entry team of Ebony Pike, Madison Gamble, Sam Wallis and Sayali Sangamnerkar.

We're grateful for the generous support and tireless efforts of these people and organisations, without whom establishing MoAŌ would not have been possible.